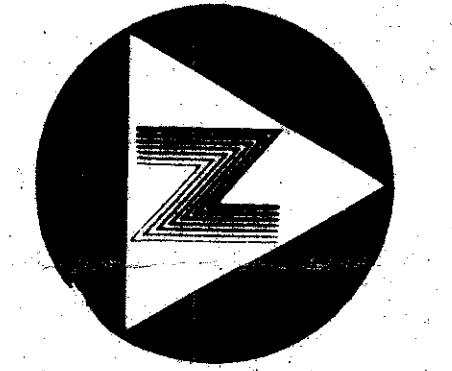
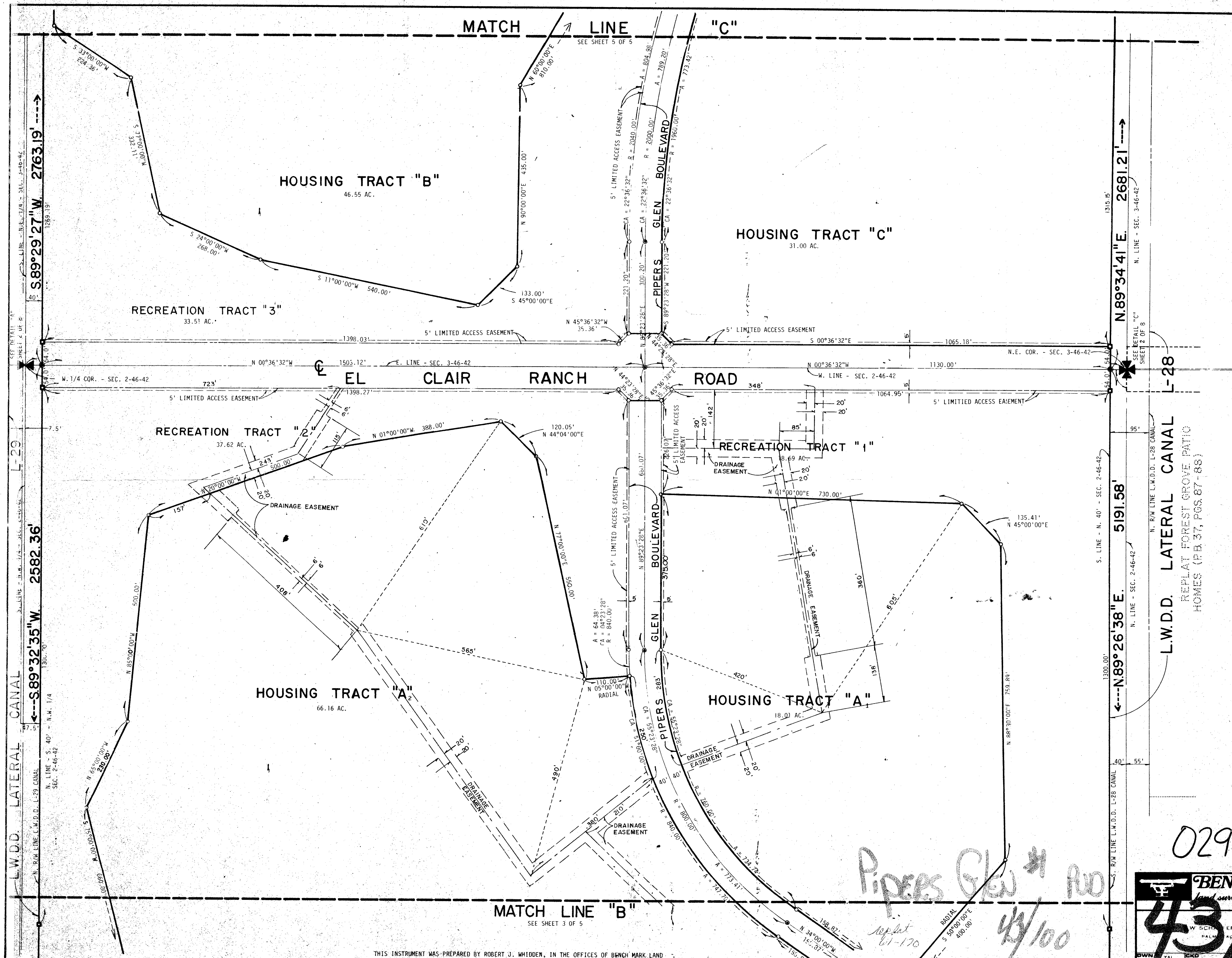


43/100

100

STATE OF FLORIDA  
COUNTY OF PALM BEACH  
THIS PLAT WAS FILED FOR  
RECORD AT \_\_\_\_\_ M.  
THIS DAY OF \_\_\_\_\_ A.D. 1981  
AND DULY RECORDED IN PLAT BOOK  
ON PAGES \_\_\_\_\_ AND \_\_\_\_\_  
JOHN B. DUNKLE, CLERK  
CIRCUIT COURT  
BY: \_\_\_\_\_ DC.



0' 100' 200'  
GRAPHIC SCALE

PIPERS GLEN  
PLAT NO. 1  
(P.U.D.)

0298-001

**BENCH MARK**  
land surveying and mapping, inc.

43/100

OWNER	TAL	SKD	RATE	WD. NO.	1200
SCALE	1"=100'	SIZE	11x17	SHEET	4 OF 5

THIS INSTRUMENT WAS PREPARED BY ROBERT J. WHIDEN, IN THE OFFICES OF BENCH MARK LAND SURVEYING AND MAPPING, INC., 2833 EXCHANGE COURT, WEST PALM BEACH, FLORIDA 33409.

*Pipers Glen #1 RD*  
*replat 61-170*  
*43/100*